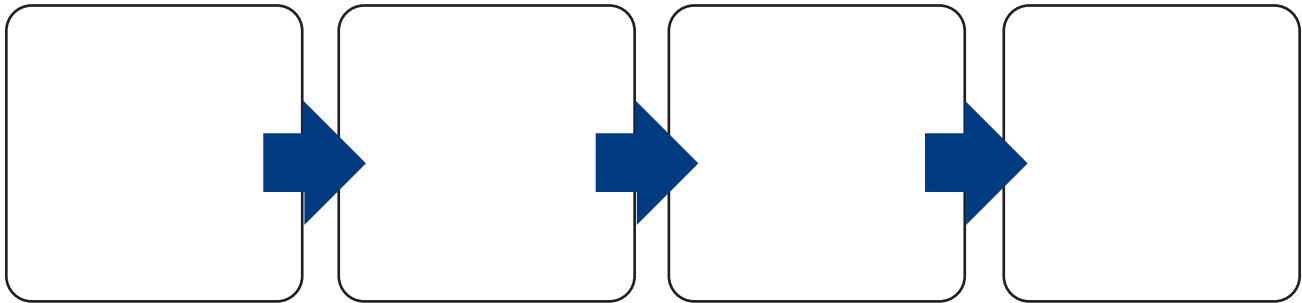


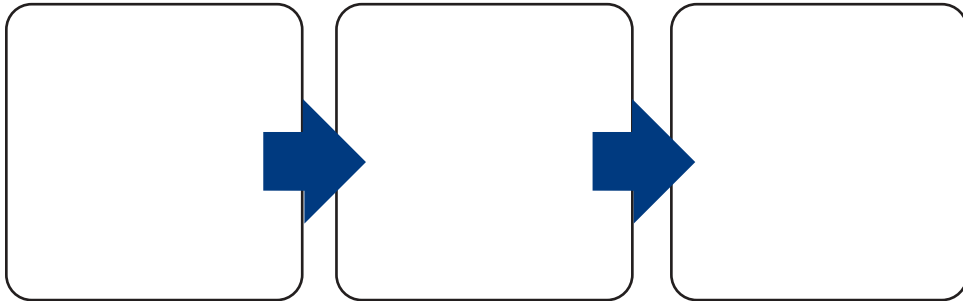


Mopec ME Series

Dual-Draft Grossing Workstations



DOWNDRAFT

A series of black, downward-pointing wavy lines representing the airflow pattern for a downdraft workstation.

BACKDRAFT

A series of black, backward-pointing wavy lines representing the airflow pattern for a backdraft workstation.

Mopec The Better Product People

ACCESSORIES

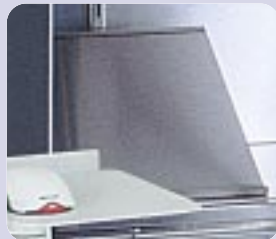
For Once, Be Able To Order Anything On The Menu.

You don't have enough space for a standard workstation; you want running water on your cutting board; and, the sink would be more easily accessible if it were in the middle of the workstation rather than on the right side. Who's going to accommodate your needs now?

The answer is Mopec. *Mopec standard workstations can easily be customized to meet your specific needs.*



M0001
Self-Contained Exhaust
With Filters



M0004
Dictation Equipment Stand



M0005
Self Contained Exhaust
System - Dual



M006
Stainless Steel Leg Frame



M0011
Halogen Light Magnifier



M0014
Video Camera Arm



M0015
Halogen Task Lighting - Dual



M0016
Camera Stand



M0021
Organizer Bins, Small
M0022
Organizer Bins, Large



M0023
Ventilated Trash Container



M0027
Computer Monitor/
Keyboard Ultra

Customization Is Our Specialty

Rather than select your product directly from a catalog, our representatives work around your space requirements, lab activity and budget to determine the best solutions for your specific work environment.

Mopec's engineers can accommodate virtually any unique plumbing request from specialty fixtures to running water on your cutting board.

From something as simple as positioning the paper towel dispenser in a more convenient location, to incorporating custom specialty fixtures or reconfiguring the unit to meet your exact needs - chances are we've done it before.

Complete The Package

The Mopec PathChair is the perfect way to complete your new work environment. Ergonomically designed to fit any size or shape technician, the PathChair provides comfort and maneuverability for reduced wear and tear on your body. The armrests provide full support without compromising range of motion.

“Mopec was the only company that offered to change the design of its standard unit to accommodate our small facility. With less waste and more workable space, we've been saving time and money ever since.”

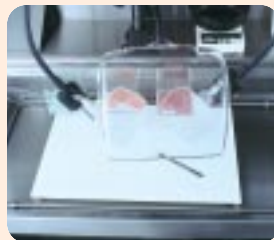
- Pathologist



M0007
Hot/Cold Foot Pedal



M0008
Rinse Bar



M0009
Safety Splash Shield



M0010
Hand Spray Rinse



M0017
Shelf and Adjustable Bracket



M0018
Formalin Collection System



M0019
Literature/Form Holder



M0020
Halogen Task Lighting -
Single



21750 Coolidge Highway • Oak Park, MI 48237
Toll Free: 800-362-8491 • Tel: 248-291-2040 • Fax: 248-291-2050
www.mopec.com

ACCESSORIES

Standard/Optional Features

		Grossing Workstations			
		ME100	ME200	ME300	ME400
Standard	Fixture w/Swing Spout	●	●	●	●
	Fan Control Module	●	●	●	●
	Perforated Grid Plates	●	●	●	●
	Backdraft Grill	●	●	●	●
	Downdraft Chamber	●	●	●	●
	Recessed Fluorescent Lighting	●	●	●	●
	G.F.C.I. Electrical Outlets	●	●	●	●
	Towel Dispenser	●	●	●	●
	Adjustable Shelf	●	●	●	●
	Integrally Constructed Sink In Grid Plate		●		
	Leg Frame			●	
	Elevating Base				●
	Organizer Bin, Small			●	●
Organizer Bin, Large			●	●	
Magnetic Instrument Tool Bar	●	●	●	●	
M0001 Self Contained Exhaust System – Single	●	●			
M0003 Formalin Container 2.5 Gal. Capacity	●	●	●	●	
M0004 Dictation Equipment Stand	●	●	●	●	
M0005 Self Contained Exhaust System – Dual			●	●	
M0006 Stainless Steel Leg Frame	●	●			
M0007 Hot/Cold Foot Pedal	●	●	●	●	
M0008 Rinse Bar	●	●	●	●	
M0009 Safety Splash Shield	●	●	●	●	
M0010 Hand Spray Rinse	●	●	●	●	
M0011 Halogen Light Magnifier	●	●	●	●	
M0014 Video Camera Arm	●	●	●	●	
M0015 Halogen Task Lighting – Dual	●	●	●	●	
M0016 Camera Stand	●	●	●	●	
M0017 Shelf and Adjustable Bracket	●	●	●	●	
M0018 Formalin Collection System	●	●	●	●	
M0019 Literature/Form Holder	●	●	●	●	
M0020 Halogen Task Lighting – Single	●	●	●	●	
M0021 Organizer Bin, Small	●	●			
M0022 Organizer Bin, Large	●	●			
M0023 Ventilated Trash Container		●	●	●	
M0026 Formalin Dispensing System		●	●	●	
M0027 Computer Monitor/Keyboard Ultra	●	●	●	●	
M0028 CPU Bracket	●	●	●	●	
M0029 Removable Writing Ledge				●	
M0030 Adjustable Dictation Stand	●	●	●	●	

Standard	— ●
Optional	— ●

Verify multiple option compatibility with your Mopec representative.

Standard Or Customized Products... We're The Go To Company

*The End Result: A Safer, More Comfortable,
More Efficient Work Environment*

We begin by getting to know you and your facility – from space limitations, volume and activity to specific physical requirements and special requests. With industry expertise, exceptional product knowledge and attention to detail, we like to end by creating a better work environment for each and every customer.

Mopec's 26,000 square-foot manufacturing facility features technologically advanced equipment and tools. This is where it all happens.

- Using the latest 3-D modeling technology, Mopec engineers create precise layouts of each product to meet your exact specifications.
- Skilled craftsmen custom-build ME Series Workstations using only the most durable, practice-proven materials.
- Before anything leaves the factory, in-house testing ensures every unit is ready to meet the challenges of the toughest work environments.
- Mopec's strict quality control process ensures every standard piece of equipment is exactly the same, from consistent bends and welds to the #4 factory finish.
- All of our equipment is factory-tested under laboratory/morgue conditions prior to shipment and all Mopec products come with a full, one-year, unconditional warranty.

ME400 Elevating G

G.F.C.I. DUPLEX OUTLET

M0029 CPU HOLDER
(NOT SHOWN)

M0016 CAMERA STAND
(NOT SHOWN)

STAINLESS STEEL SHELF

M0030 COMPUTER/MONITOR
KEYBOARD-ULTRA

M0019 LITERATURE DISPENSER
(NOT SHOWN)

M0004 DICTATION EQUIPMENT
STAND
(NOT SHOWN)

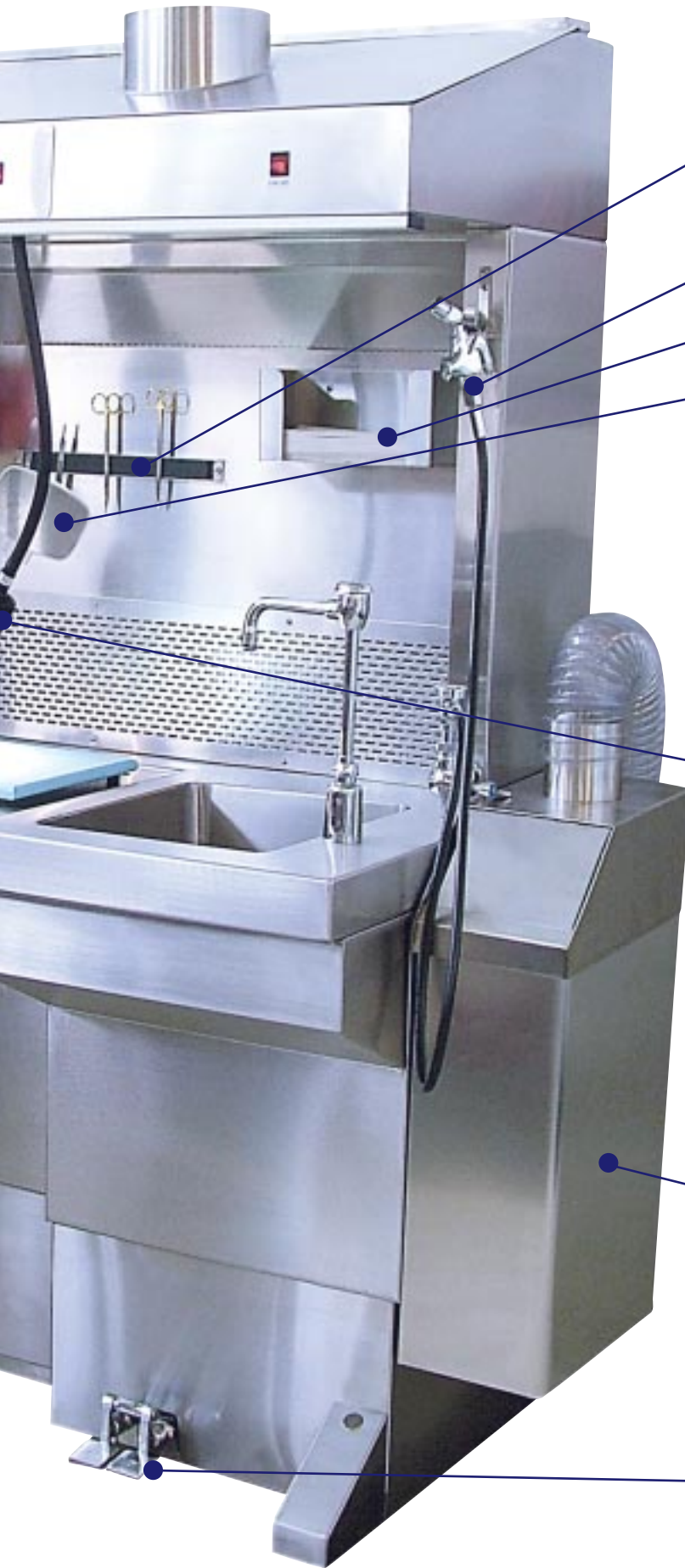
M0014 VIDEO CAMERA ARM

M0021 & M0022 ORGANIZER BINS
(NOT SHOWN)

M0003 FORMALIN
DISPENSING CONTAINER
(NOT SHOWN)



Crossing Workstation



M0024 MAGNETIC TOOL BAR

M0010 HAND SPRAY RINSE

PAPER TOWEL HOLDER

M0011 HALOGEN LIGHT MAGNIFIER

M0009 SAFETY SPLASH SHIELD
(NOT SHOWN)

M0015 HALOGEN TASK LIGHTING-DUAL

M0018 FORMALIN COLLECTION SYSTEM
(NOT SHOWN)

M0023 VENTILATED TRASH CONTAINER

BL300 1/2 HP DISPOSAL

BL400 3/4 HP DISPOSAL
(NOT SHOWN)

M0007 FOOT PEDAL

ME400



ME400 Elevating Dual-Draft Grossing Workstation

As Mopec's most advanced dual-draft system, the ME400 with adjustable height easily accommodates multiple users and the faster pace of larger facilities. Standing or sitting, the end result is increased efficiency and productivity.

Work More Comfortably, More Efficiently

Advanced elevating technology accommodates all ME400 units, maximizing safety, ergonomics and comfort. Technicians can raise or lower the workstation from as low as 34" to a maximum counter height of 46". Sophisticated design ensures the elevating movement is smoother, quieter and more durable than ever before.

The ME400 Includes All Mopec Dual-Draft Grossing Workstation Standard Features And Can Be Further Customized To Meet Your Needs By Adding Any Of The Following Options:

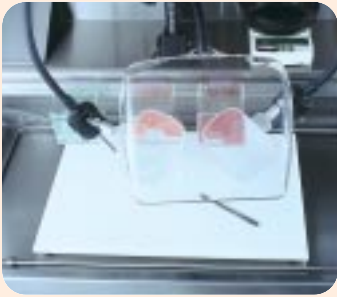
- Fan/Filter System
- Computer Attachments
- Rinse Bar
- Lights and Magnifiers
- Safety Splash Shield
- Dictation Stand
- Literature Holder
- Spray and Rinse Hose
- Video Camera Arm
- Still Camera Stand
- Large Adjustable Shelf
- Commercial Grade 1/2 HP or 3/4 HP Disposal
- Formalin Collection System
- Formalin Dispensing System
- Ventilated Trash Container
- Hot and Cold Foot Pedals

**If You Require Additional Features,
Ask Your Mopec Representative.**



M0010-Hand Spray Rinse & Hose with Vacuum Breaker (Optional)

The chrome-plated brass hand spray is equipped with a 60" high-pressure hose for easy rinsing of the entire workstation.



M0009-Safety Splash Shield (Optional)

Features a Lexan shield on a flexible arm for easy positioning. (Removable)



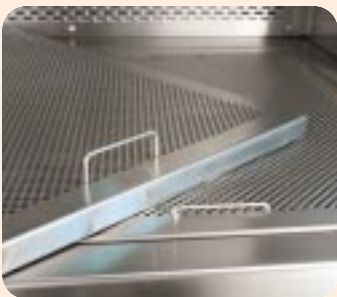
M0030-Computer Monitor/Keyboard-Ultra (Optional)

For optimal comfort and efficiency, this stand has separate adjustable positioning arms for the flat screen monitor and the keyboard.



M0015-Dual Halogen Lights on Flexible Arms (Optional)

Two high-intensity halogen lights positioned on 14" adjustable arms for precision lighting.



Work Area Grid Plates (Standard)

Small perforations in grid plates allow delicate specimens to be handled still maintaining ventilation on work surface.



M0017-Shelf and Adjustment Bracket (Optional)

An extra-long, adjustable stainless steel shelf can be easily removed for cleaning and repositioning.

Freestanding Dual-Draft Grossing Workstation With Large Sink

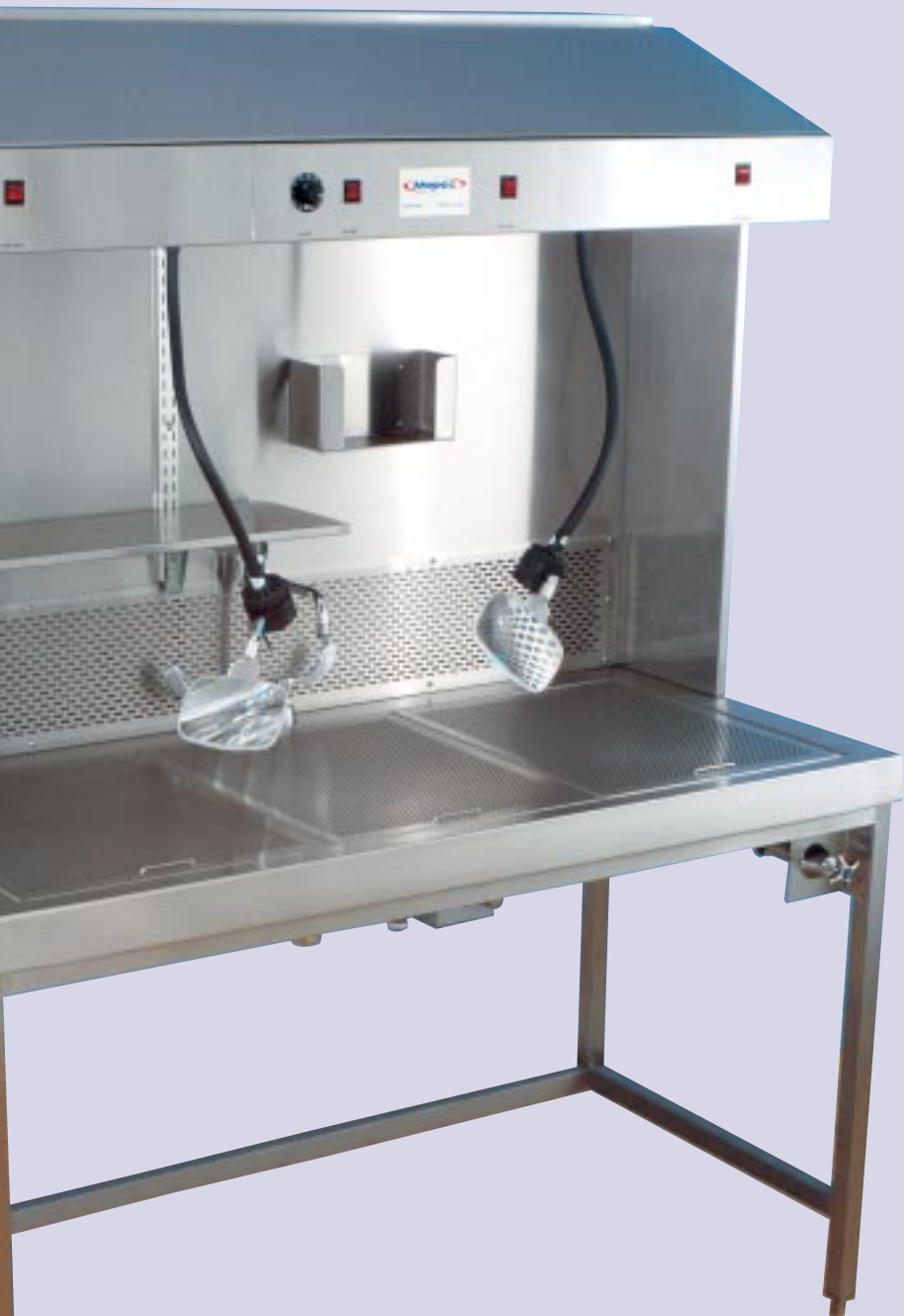
Length: 60" Depth: 29" Height: 79"

"Updating our morgue was quite an undertaking, but Mopec worked within our budget and space requirements to get the job done."

– County Morgue



ME300



ME300 Freestanding Dual-Draft Grossing Workstation

The ME300, featuring our dual-draft system, can handle the load of larger laboratories while providing a roomier, well-ventilated work environment. Designed as a free-standing unit, the ME300 includes a heavy-duty support frame with four leveling feet for placement on uneven surfaces.

The ME300 Stands Out In A Crowd

The efficiency of the ME300 can be further maximized by adding an optional commercial grade disposal and/or hands-free hot and cold foot pedals. The ME300 can also be equipped with the optional formalin collection system to safely and effectively capture used formalin, eliminating specimen contamination.

The ME300 Includes All Mopec Dual-Draft Grossing Workstation Standard Features And Can Be Further Customized To Meet Your Needs By Adding Any Of The Following Options:

- Fan/Filter System
- Computer Attachments
- Rinse Bar
- Lights and Magnifiers
- Safety Splash Shield
- Dictation Stand
- Literature Holder
- Spray and Rinse Hose
- Video Camera Arm
- Still Camera Stand
- Large Adjustable Shelf
- Commercial Grade 1/2 HP or 3/4 HP Disposal
- Formalin Dispensing & Collection Systems
- Ventilated Trash Container
- Hot and Cold Foot Pedals

**If You Require Additional Features,
Ask Your Mopec Representative.**

Countertop Dual-Draft Grossing Workstation With Large Sink

Length: 48" Depth: 29" Height: 45"

"We finally made use of every inch of workspace. The ME200 truly complements our larger units, allowing us to improve productivity across the board."

– Hospital Administrator



**M0021 & M0022
Organizer Bins (Optional)**
Clear acrylic bins
(5" x 5" x 5").



**M0006-Stainless Steel
Support Frame (Optional)**
Convert the countertop
ME100 and ME200 models
to free-standing units when
counter space is limited.
The heavy-duty frame has
four adjustable bullet feet
for leveling.



**M0001-Self-Contained
Exhaust With Filters
(Optional)**
The disposable filters are
easily accessible through
Mopec's specially designed
front access panel.



**M0004-Dictation
Equipment Stand (Optional)**
The angled stainless steel
dictation stand sits on any
flat surface and will accom-
modate most dictation
recorders. The stand is tilted
forward allowing full view of
the top of the dictation
machine.



**M0019-Requisition Form
And Literature Holders
(Optional)**
Position the rack for easy
access to requisition forms.



**M0016-Digital
Camera Stand (Optional)**
Camera is held steady and
can be positioned to obtain
optimal coverage.



ME200



Countertop Dual-Draft Grossing Workstation

Placed on a countertop, mounted to a wall or converted to a freestanding unit with the optional support frame, the ME200 works wonders in tight quarters. The dual-draft system and extra deep sink further maximize efficiency and safety when the pace quickens.

Try This On For Size

The integrally constructed sink (in grid plate) measures 15" x 12" x 5" Deep, giving you extra room to work more efficiently and avoid excessive splashing and contamination. All sink corners are rounded for easy cleaning and an optional waste disposal is available. The ME200 is also the perfect fit for larger facilities that require additional workspace to meet increased demands.

The ME200 Includes All Mopec Dual-Draft Grossing Workstation Standard Features And Can Be Further Customized To Meet Your Needs By Adding Any Of The Following Options:

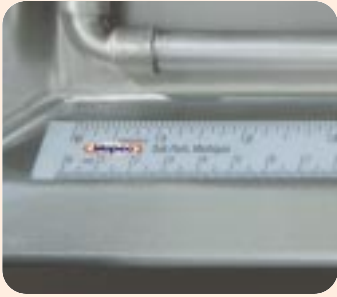
- Fan/Filter System
- Computer Attachments
- Rinse Bar
- Lights and Magnifiers
- Safety Splash Shield
- Dictation Stand
- Literature Holder
- Spray and Rinse Hose
- Video Camera Arm
- Still Camera Stand
- Large Adjustable Shelf
- Organizer Bins
- Stainless Steel Support Frame
- Commercial Grade 1/2 HP or 3/4 HP Disposal
- Ventilated Trash Container

**If You Require Additional Features,
Ask Your Mopec Representative.**



BC031-Blue Dissection Board (Standard)

The photo blue surface is an excellent background for cutting surgical or autopsy tissue. Easy to clean board has rounded edges and non-skid rubber bumpers.



Inch/Centimeter Ruler (Standard)

A washable, easy-to-read, centimeter/inch ruler is strategically attached to the inside lip of the grossing area sink. A special coating protects the ruler from most chemicals used in the lab.



M0024 Magnetic Tool Bar (Standard)

The magnetic tool bar allows you to better organize space and work more efficiently.



M0001-Self-Contained Exhaust With Filters (Optional)

This system requires no ducting and incorporates a quiet, variable speed fan that draws harmful fumes, vapors and odors safely away from the user through a unique internal filtration system.



M0015-Dual Halogen Lights (Optional)

High-intensity bulbs on two 14" adjustable arms allow for precision lighting.



M0006-Stainless Steel Support Frame (Optional)

Convert the countertop ME100 and ME200 models to free-standing units when counter space is limited. The heavy-duty frame has four adjustable bullet feet for leveling.

Countertop Dual-Draft Grossing Workstation

Length: 48" Depth: 29" Height: 45"

"It was a relief to put the ME100 to work for us and put an end to poor ventilation, inadequate lighting and a cluttered work environment."

— Pathologists' Assistant



ME100



Countertop Dual-Draft Crossing Workstation

When you don't have a lot of space, the Mopec ME100 is the perfect fit. Built with the smaller laboratory in mind, the compact ME100's dual-draft ventilation system keeps air circulating, even in the most confined areas, so you can breathe easy.

Make Room For More Efficiency

Placed on an existing countertop or mounted directly to a wall, the ME100 makes the most of your limited workspace. With a little extra room to spare, the ME100 can become a free-standing unit by adding the optional heavy-duty stainless steel frame. When space is an issue, the ME100 makes the perfect addition to a larger facility with heavier workloads.

The ME100 Includes All Mopec Dual-Draft Crossing Workstation Standard Features And Can Be Further Customized To Meet Your Needs By Adding Any Of The Following Options:

- Fan/Filter System
- Computer Attachments
- Rinse Bar
- Lights & Magnifiers
- Safety Splash Shield
- Dictation Stand
- Literature Holder
- Spray and Rinse Hose
- Video Camera Arm
- Still Camera Stand
- Large Adjustable Shelf
- Organizer Bins
- Stainless Steel Support Frame

**If You Require Additional Features,
Ask Your Mopec Representative.**

Mopec

The Better

Product People



In today's laboratory, you're expected to meet rigid deadlines despite increasing workloads; maximize efficiency within tight budgets; and, oftentimes, work in outdated facilities while still keeping up with new technology and employee safety issues. So, where do you turn for answers?

Mopec. *We understand these challenges and we're constantly developing new and improved ways to meet your evolving needs.*

It Starts With Quality

The Mopec solution begins with better products. From design and engineering to manufacturing and sales, we put customer input to work creating the best pathology and histology equipment in the industry. We are committed to putting quality first in everything we do:

- Quality materials
- Quality craftsmanship
- Quality design
- Quality installation
- Quality manufacturing
- Quality products

A Support System Like No Other

Mopec has more than 40 representatives across the country, a customer service center and a team of dedicated engineers to help you make the best decisions for your lab. Each member of the Mopec team has extensive and on-going training, providing knowledgeable, expert advice and cost-effective solutions to meet each unique customer need.

Most importantly, we have learned that building personal relationships is the basis for mutual success. That means we are with you every step of the way, working through your "wish list" and product specifications to installation and service after the sale. Following our

business fundamentals ensures that your Mopec equipment is always a direct reflection of your specific needs.

Delivering Satisfaction From Start To Finish

When your needs change, our products change. It's that simple. We're listening to you and putting your words to work every day in:

- Superior products
- Shorter delivery time
- More competitive prices

We also stand behind our equipment with a full, one-year, unconditional warranty. The end result is what we've all been working toward: a safer, more comfortable and more efficient work environment.



“Mopec provides unbeatable support. From the day we started working with them, someone was always available to help us with even the slightest detail. That kind of personal service isn't easy to find.”

– Pathology Department Manager

We Customize, When Others Only Accessorize

More space, advanced tools, better ventilation... the details make the workstation. Mopec has developed a complete line of dual-draft grossing workstations to fit your requirements. We also know that details can be changed, so you can build your workstation just the way you want it – all at an affordable price.



The Two Best Reasons To Purchase A Mopec Dual-Draft Grossing Workstation – Your Lungs

Mopec's unique dual-draft system pulls air down through the work surface and through the back of the workstation. The downdraft and backdraft automatically adjusts as your workflow increases, ensuring airflow is constant and removing hazardous fumes from the work area for a safer more pleasant work environment. All Mopec workstations are also factory-fitted with exhaust duct work that can be connected to any in-house ventilation system. The optional self-contained re-circulating exhaust system has an adjustable variable speed fan with replaceable potassium permanganate absorption filters to maximize fume-handling efficiency.

Built Better From Top-To-Bottom

Built of heavy gauge stainless steel, Mopec workstations offer superior strength. Eliminating plastic and paint in the construction means a more durable, longer-lasting finish. The top-to-bottom stainless steel construction withstands

the harshest laboratory disinfectants. Sinks are integrally constructed of 18-gauge stainless steel with rounded corners and no parting seams for easy cleaning. Work surfaces are recessed and sloped to facilitate drainage into the extra large sink. All switches are encased in a waterproof flexible seal to assure easy clean up and disinfecting. We install the highest quality plumbing fixtures for innovative design, quality craftsmanship and cutting-edge safety features. Every faucet comes equipped with a vacuum breaker to protect your water supply from contamination.

At Mopec, Standard Features Go Beyond The Ordinary

- All stainless steel construction
- Dual-draft system automatically adjusts to work surface activity, keeping airflow constant and free of fumes and odors.
- Built-in ruler on work surface for easy cleaning and decontamination
- Magnetic instrument holder for easy accessibility

- Recessed fluorescent lighting – directed over entire work area for better illumination
- Eye level control panel for lighting, fan and switches
- G.F.C.I. electrical outlet safely accommodates any electrical dissection equipment
- Blue polyethylene dissecting cutting board – 16" x 23" x .75"
- Paper towel dispenser
- Standard work area grid plates
- Swing spout faucets with built-in vacuum breaker and wrist blade handles
- Vacuum breakers protect your water supply from contamination by preventing backflow into your water system
- Adjustable stainless steel shelf
- All internal plumbing, electrical lines and vent ducts are factory installed and tested
- Utilities hook-up is minimal



COOLEST RULER IN PATHOLOGY

The hottest new product at Mopec is the coolest ruler in pathology. There are all kinds of rulers in the medical field, but none like Mopec's. No matter what end the ruler is picked up from – no matter what side is up – the numbers are always right. Reading left to right, top to bottom, the ruler is always operational no matter how you grab it. Functionally, the ruler never stops working.

- Hardened and tempered stainless steel
- Non-glare satin finish
- Micro fine graduations etched on surface
- Meets federal specifications
- Measures in increments of full centimeters on top and bottom

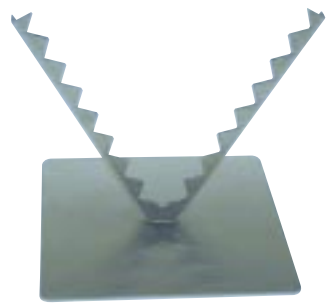
Order Product No. BA047

LIMB LOCK

Exclusively offered by Mopec, this simple self-adjusting design provides a safe and steady method to secure all limb specimens during any surgical or autopsy pathology dissection.

Made entirely of heavy gauge stainless steel, the Limb Lock's unique notched "V" shape vise offers all the benefits of a second set of hands, without the unnecessary employee safety concerns such as exposure to sharps, bone saws or aerosolized hazards.

Multiple units can be utilized simultaneously for larger amputation specimens and the unit can be easily cleaned with all standard hospital disinfectants.



DISPOSABLE MACRO PREP KNIVES

Completely disposable knife features a non-slip handle and high-quality, double-honed stainless steel flexible blades that may be stropped for longer life.

(Pk of 10)	Size
AH024 Cartilage Knife	4" (100mm)
AH025 Trimming Knife	6" (150mm)
AH026 Autopsy & Surgical	8" (200mm)
AH027 Lung Knife	10" (250mm)
AH028 Brain Knife	12" (300mm)

PATH CLOUD

Proven effective against HIV-1, Herpes Simplex 2, Staphylococcus, Pseudomonas, Canine Parvo, Tuberculosis and much more, Path Cloud destroys a wide range of pathogenic bacteria, viruses and fungi. The tuberculocidal meets OSHA's Bloodborne Pathogens Standard for decontamination of hard, non-porous environmental surfaces. Sold in a 32 oz. spray bottle, the powerful foaming action cleans, disinfects and deodorizes in one easy operation. Ideal for heavily soiled pathology surfaces including:

- Autopsy tables
- Grossing stations
- Dissection boards
- Laboratory counters/backsplashes
- Morgue/cutting room sinks
- Body trays
- Plumbing fixtures
- Dissection tables

(Mopec's EPA Establishment No. 5747-MI-1, EPA Registration No 1839-83-7495)

Order Product No. BE045



EAZY SOAK

Enzyme instrument presoak & cleaner. Our unique enzyme instrument cleaner works without scrubbing or prerinsing. Easy Soak digests all tissue, blood and exudative materials. Perfect for use on hard-to-clean scissors, forceps, serrated cutting blades and scalpel handles.

Clean your lab instruments in three easy steps. Simply add 2 oz. Easy Soak to one gallon of hot tap water, add the soiled instruments and walk away. Your instruments will be clean without the hard work. Concentrated liquid sold in 32 oz. containers.

Order Product No. BE046



For a complete catalog detailing our products and services, please call or visit our web site.



21750 Coolidge Highway • Oak Park, MI 48237
 Toll Free: **800-362-8491** • Tel: **248-291-2040** • Fax: **248-291-2050**
www.mopec.com